

**GREGG  
BAKER**

gregg@greggbaker.ca  
www.greggbaker.ca  
Direct: 604 649 1259

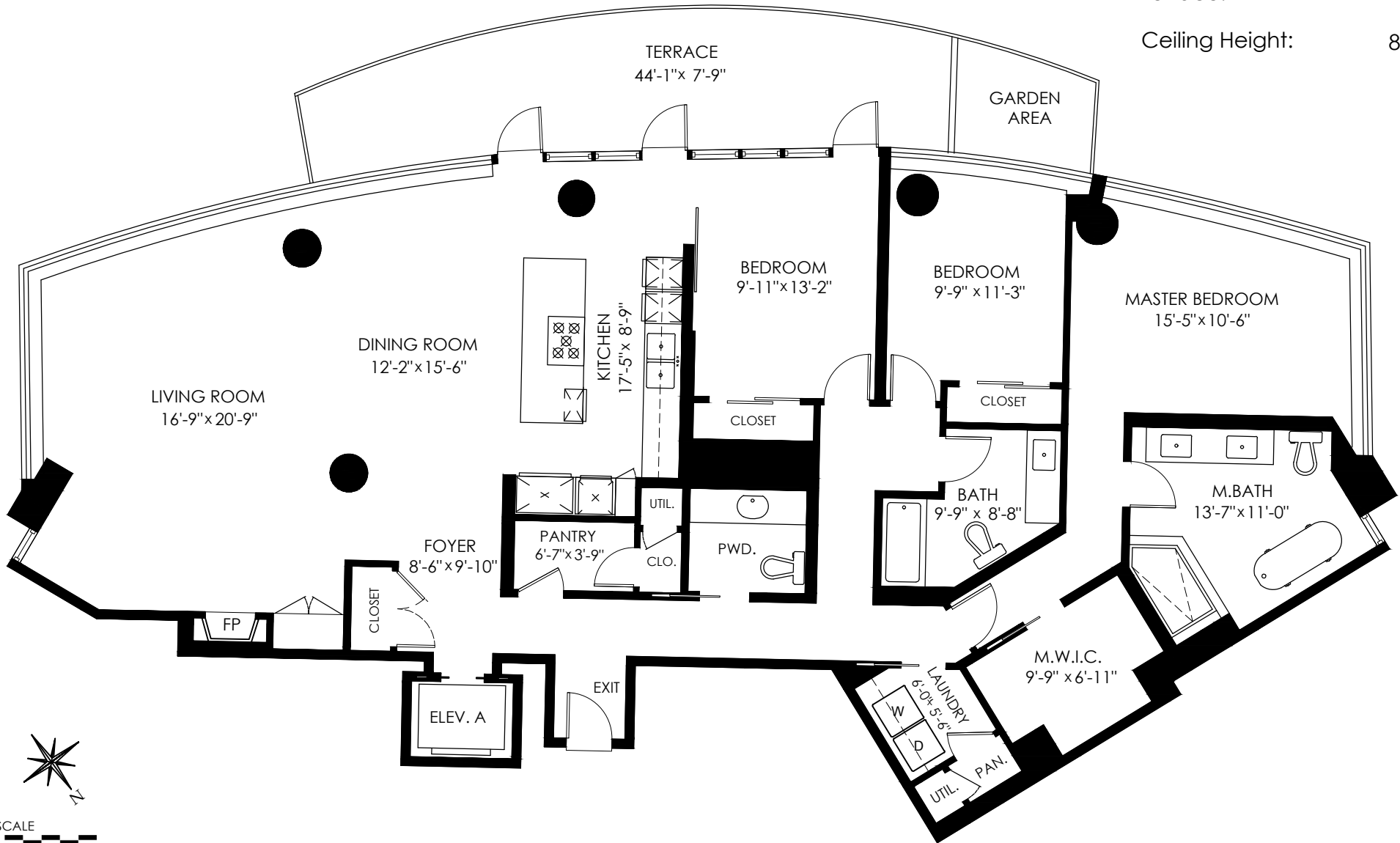
**ENGEL & VÖLKERS**<sup>®</sup>

# 801-1560 Homer Mews, Vancouver

Floor Area: 2,071 sq.ft.

Terrace: 302 sq.ft.

Ceiling Height: 8'-8"



Measuring, Scanning, Design & Permits | 604-876-3738

E&O Insured for \$3,000,000. TOTAL SQFT AS PER STRATA PLAN.

www.DraftOnSite.com