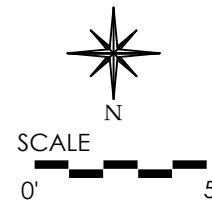
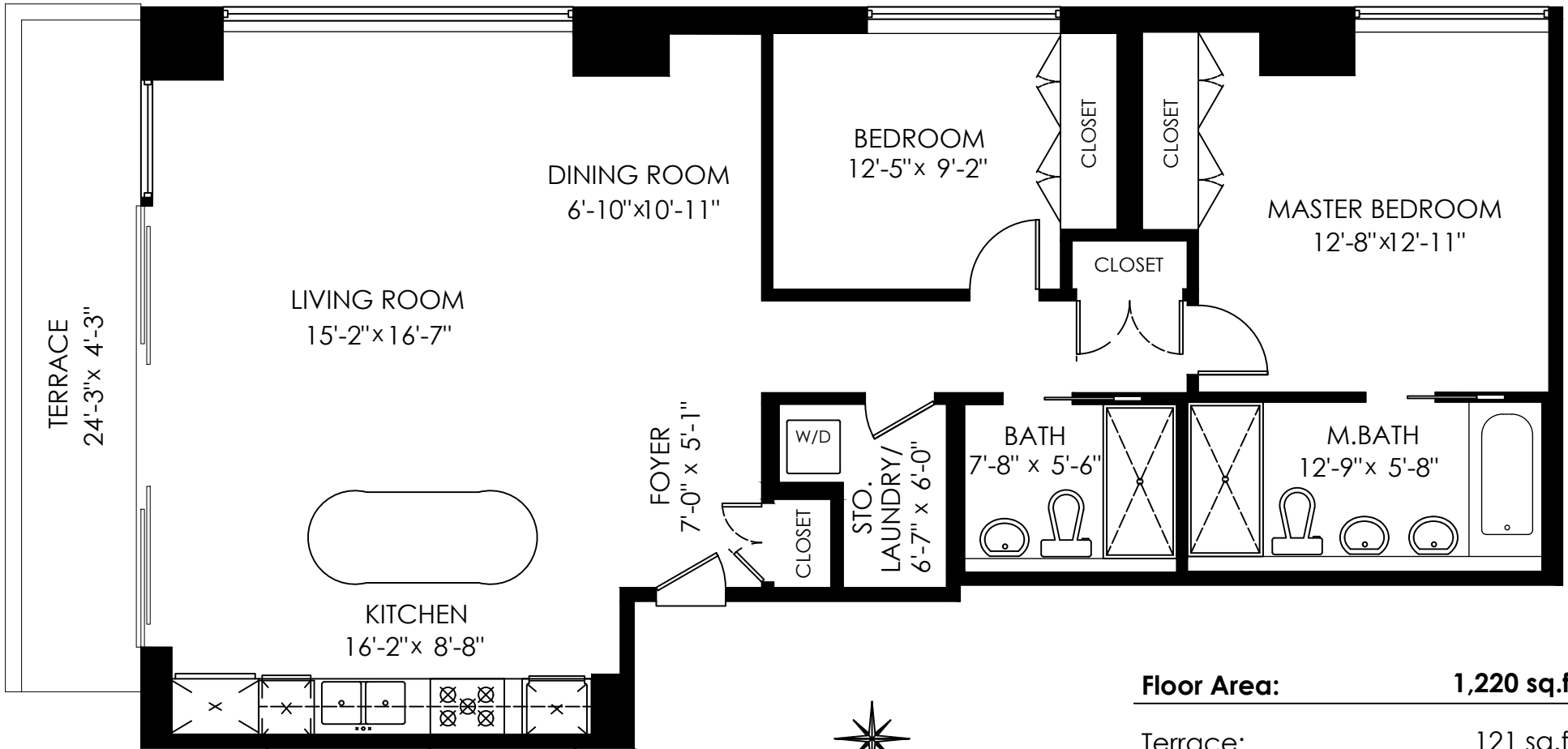


**3503-838 W Hastings St.
Vancouver**



Floor Area: 1,220 sq.ft.
Terrace: 121 sq.ft.
Ceiling Height: 9'-0"

Measuring, Design & Permits | 604-876-3738

E&O Insured for \$1,000,000. Total square foot calculated as per strata plan . www.DraftOnSite.com

